



IT'S TIME TO VIEW RIVERPLACE IN A WHOLE NEW LIGHT.

Experience the renaissance at Riverplace Offices Northeast, a one-of-a-kind "historic meets modern" workplace destination.

riverplaceoffices.com



Collaborative work areas with abundant natural light



Spacious conference and training rooms



Upgraded tenant lounge with fireplace



Newly renovated rooftop deck with city views

Significant capital improvements have been designed to enhance Riverplace's sense of community and engage the modern workforce.

PROPERTY HIGHLIGHTS

Situated on the historic and beautiful Mississippi Riverfront, Riverplace's unique design and prime location inspire tenants looking for creative office solutions in a rich, fun, and exciting urban environment. Boasting wonderful on-site restaurants, a conference facility, and a fitness center, Riverplace embraces the new work place and offers employers and employees a one-of-a-kind experience. Walk to neighborhood restaurants and shopping, while enjoying breathtaking views of Minneapolis and the Mississippi River.

KEY FEATURES

- Newly renovated conference center, tenant lounge, rooftop deck, and plans for a state-of-the-art fitness center
- Dining at Wilde Café & Spirits
- Nearby shopping, entertainment, banks, premier dining, parks and festivals
- On-site parking with electric vehicle charging stations and indoor bicycle storage
- Panoramic views of the Mississippi River

AVAILABLE FOR LEASE

ADDRESS

One Main - 1 Main St SE
Exposition Hall - 43 Main St SE
East Bridge - 10 NE 2nd St
Brown Ryan - 15 Main St SE
Minneapolis, MN 55414

CAMPUS SIZE (4 BUILDINGS)

3.76 Acres / 249,500 square feet

ON-SITE

Building management, engineering, building security, and storage facility

PARKING

On-site parking garage with monthly contracts starting at \$100/stall

HISTORIC MEETS MODERN

CONVENIENT AMENITIES

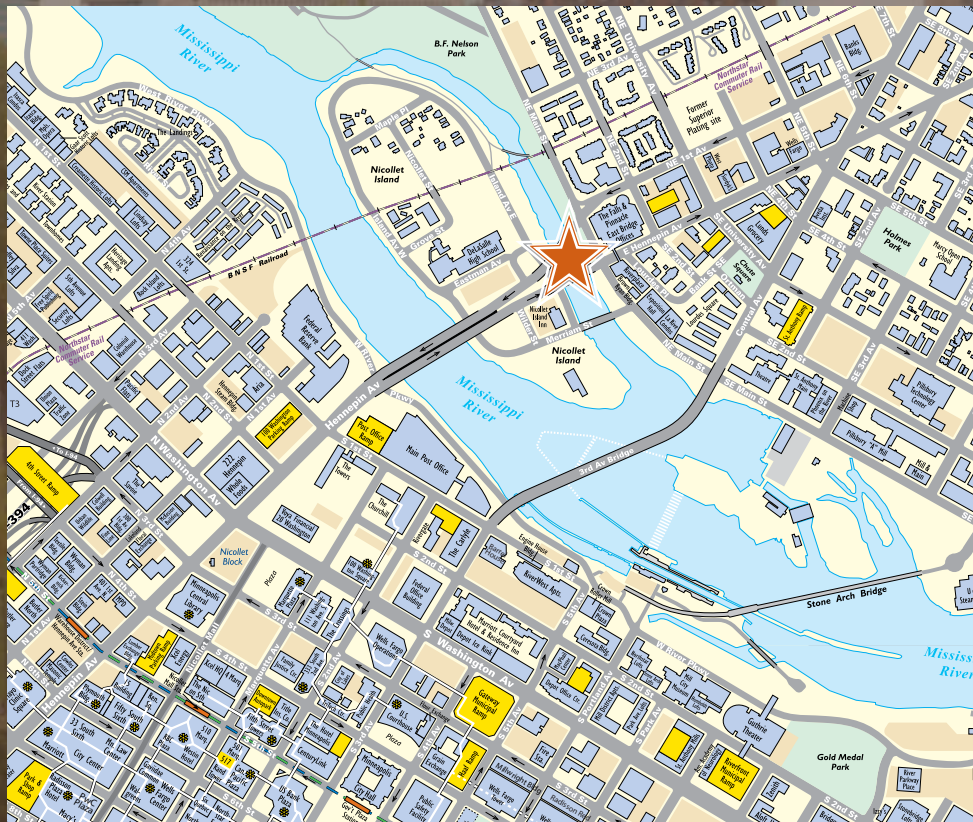


Historic charm and authenticity of Northeast neighborhood



Panoramic views with convenient access to downtown Minneapolis

PRIME LOCATION



Discover the look and feel of modern character. Embracing the historic traditions of the Northeast neighborhood with updated building renovations perfectly positions Riverplace Offices Northeast to capture the urban vibe that is so attractive to today's workforce.

riverplaceoffices.com

CONTACT

JIM KENNEY
952 897 7822
jim.kenney@colliers.com

RYAN GEIGER
952 374 5821
ryan.geiger@colliers.com

Leased by :



Owned & Managed by :





AVAILABLE FOR LEASE

CAMPUS SIZE (4 BUILDINGS) 3.76 Acres / 249,500 square feet

AVAILABLE Suite sizes from 150 to 12,000 RSF

LEASE RATES

One Main, Exposition Hall, East Bridge:
\$12 - \$18 per rentable square foot
Brown Ryan:
\$20 - \$23 per rentable square foot

2019 TAXES & CAM Approximately \$13.00 per rentable square foot

PARKING

On-site parking garage (contracts starting at \$100/month/stall)

ONE MAIN

1 Main St SE
Minneapolis, MN 55414
72,553 square feet

BROWN RYAN

15 Main St SE
Minneapolis, MN 55414
9,828 square feet

EAST BRIDGE

10 NE 2nd St
Minneapolis, MN 55413
65,372 square feet

EXPOSITION HALL

43 Main St SE
Minneapolis, MN 55414
101,747 square feet

RECENT IMPROVEMENTS

- New conference center
- Tenant lounge
- Rooftop deck
- New, state-of-the-art fitness center

BUILDING AND NEIGHBORHOOD AMENITIES

- Dining at Wilde Café & Spirits
- Nearby shopping, entertainment, banks, premier dining, parks and festivals
- On-site parking with electric vehicle charging station
- Indoor bicycle storage
- Panoramic views of the Mississippi River
- On-site building management, engineering, building security and storage facilities

For additional information and availability :

JIM KENNEY
952 897 7822
jim.kenney@colliers.com
riverplaceoffices.com

RYAN GEIGER
952 374 5821
ryan.geiger@colliers.com

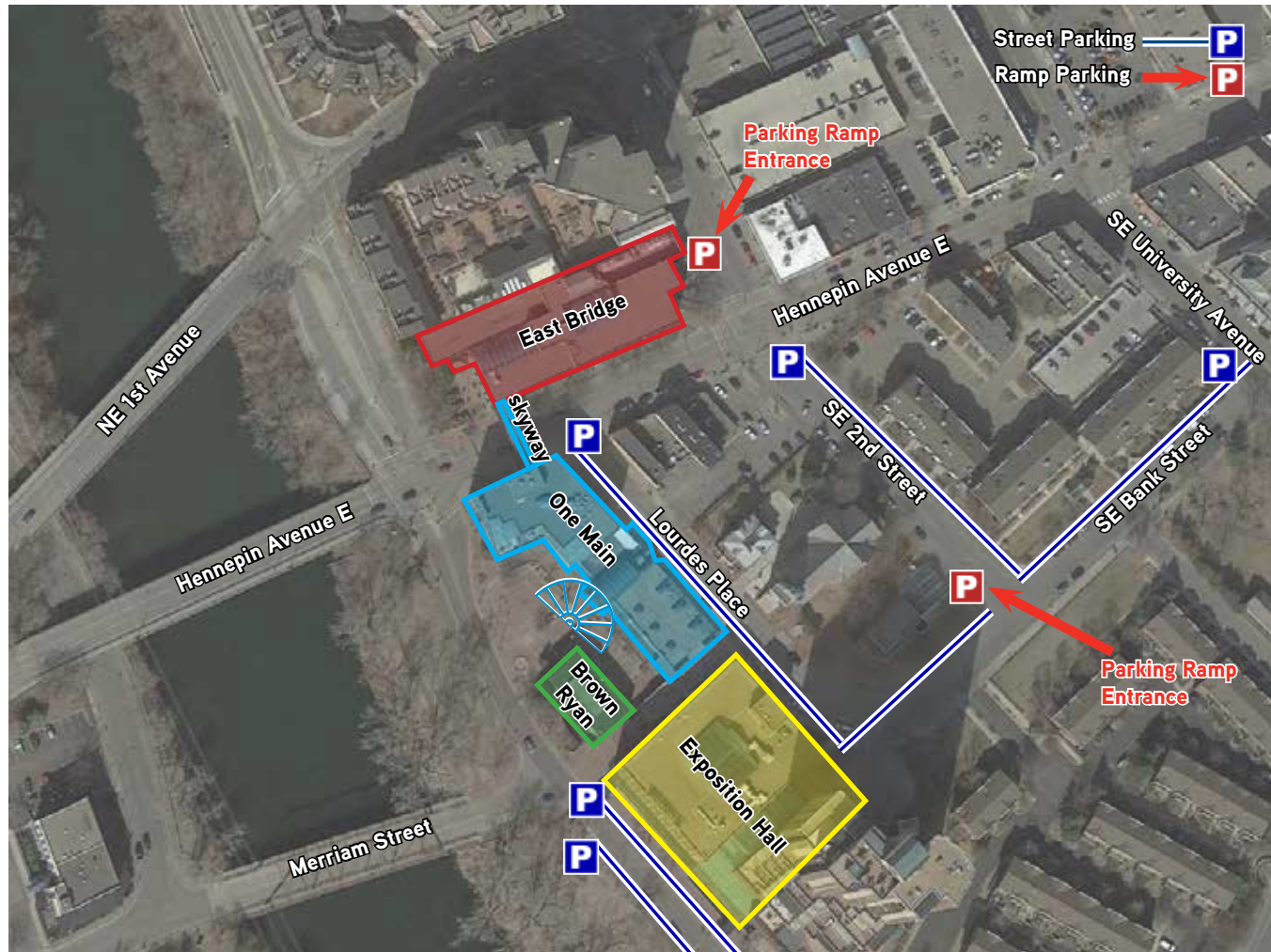
Leased by : Asset Managed by :



PARKING AND SITE MAP



riverplaceoffices.com



For additional information and availability:

JIM KENNEY
952 897 7822
jim.kenney@colliers.com

RYAN GEIGER
952 374 5821
ryan.geiger@colliers.com

Leased by:



COLLIERS INTERNATIONAL
900 2nd Avenue South, Suite 1575
Minneapolis, MN 55402
www.colliers.com/msp

Asset Managed by:



ACCESSIBILITY



riverplaceoffices.com



For additional information and availability :

JIM KENNEY
952 897 7822
jim.kenney@colliers.com

RYAN GEIGER
952 374 5821
ryan.geiger@colliers.com

Leased by :



COLLIERS INTERNATIONAL
900 2nd Avenue South, Suite 1575
Minneapolis, MN 55402
www.colliers.com/msp

Asset Managed by :



TENANT FITNESS CENTER



riverplaceoffices.com



Wide array of weights



Ellipticals, treadmills, and stationary bicycles



Quiet yoga and meditation area



State of the art exercise machines



Spinning



Floor exercise room

For additional information and availability :

JIM KENNEY
952 897 7822
jim.kenney@colliers.com

RYAN GEIGER
952 374 5821
ryan.geiger@colliers.com

Leased by :



COLLIERS INTERNATIONAL
900 2nd Avenue South, Suite 1575
Minneapolis, MN 55402
www.colliers.com/msp

Asset Managed by :



TENANT FITNESS CENTER



riverplaceoffices.com



Sink and countertop space for maximum use



Plenty of lockers in both men's and women's locker rooms



Complimentary towels



Spacious shower facilities

For additional information and availability :

JIM KENNEY
952 897 7822
jim.kenney@colliers.com

RYAN GEIGER
952 374 5821
ryan.geiger@colliers.com

Leased by :



COLLIERS INTERNATIONAL
900 2nd Avenue South, Suite 1575
Minneapolis, MN 55402
www.colliers.com/msp

Asset Managed by :



ACCESS TO NEWLY RENOVATED CAMPUS AMENITIES



riverplaceoffices.com



Collaborative work areas with abundant natural light



Spacious conference and training rooms



Upgraded tenant lounge with fireplace



Newly renovated rooftop deck with city views

For additional information and availability:

JIM KENNEY
952 897 7822
jim.kenney@colliers.com

RYAN GEIGER
952 374 5821
ryan.geiger@colliers.com

Leased by:



COLLIERS INTERNATIONAL
900 2nd Avenue South, Suite 1575
Minneapolis, MN 55402
www.colliers.com/msp

Asset Managed by:

